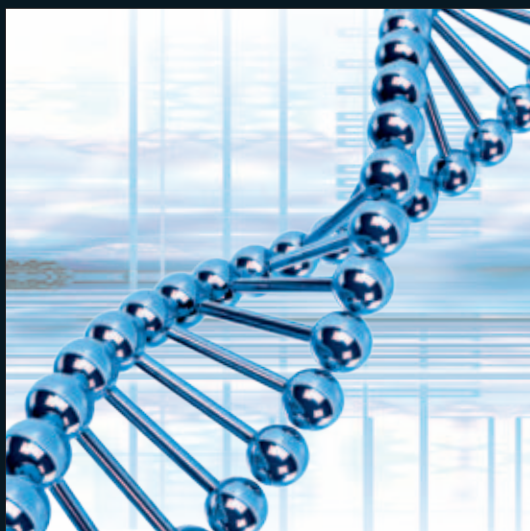


Valves
Proportional valves
Pressure control valves
Flow control valves
Directional valves
Check valves
Modular valves
Electronics
Pumps
Cylinders
Customized Solutions



INNOVATION BY NATURE

HYDRAULICS PRODUCT GUIDE



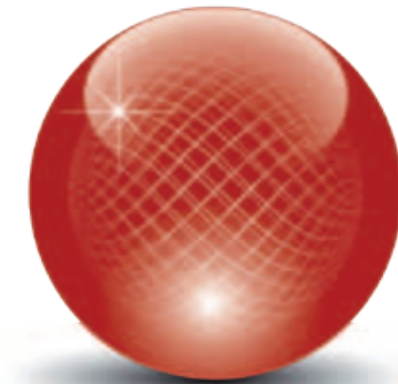
Your full line partner

MISSION & SALES NETWORK

*Technological innovation and customer satisfaction:
the essence of Duplomatic Oleodinamica*

Technological innovation and Customer satisfaction are the strategic points upon which Duplomatic Oleodinamica bases its own company vision; the company aims at becoming the technological reference partner, both in the national and international scenario, in designing, producing and installing electro-hydraulic systems for the machine automation.

With a renewed share and management structure, the Company has strengthened its trading, technical and production organization in the two business units: Components and Systems.



MISSION

The mission of Duplomatic Oleodinamica is to create value for the Customer through a close cooperation and the sharing of knowledge and experiences during the product development phases for the automation of the Customer's machines.

The Company is actively committed in performing Research & Development activities in order to anticipate the market's needs, being aware that the improvement of the technological expertise is a key point for excellence and competitiveness.

SALES NETWORK

The global approach is guaranteed by an international network of more than 100 distributors and resellers who are active on all the strategic markets with the goal of being as near as possible to the Customers.



QUALITY

The quality of the products and of the production processes of Duplomatic Oleodinamica is acknowledged by the ISO 9001 – VISION 2008 Certification released by the SQS-IQNet Certification Board. Furthermore the Company obtained the PED Certification for hydraulic systems and the ATEX Certification for electro-valves and hydraulic cylinders.



APPLICATION SECTORS

Duplomatic Oleodinamica designs and produces hydraulic components and systems for all the application sectors.

INDUSTRY

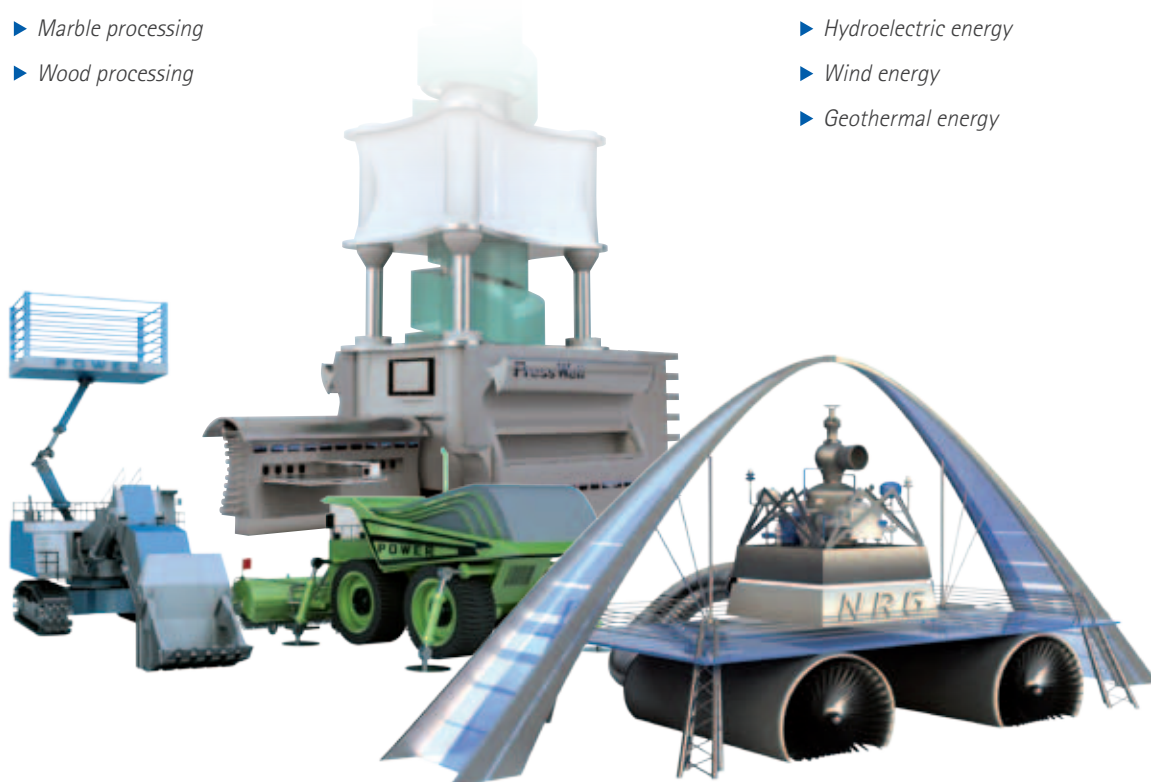
- ▶ Metal forming
- ▶ Machine tools
- ▶ Plastic and rubber
- ▶ Steel industry
- ▶ Marble processing
- ▶ Wood processing

MOBILE

- ▶ Agricultural machines
- ▶ Earthmoving machines
- ▶ Cranes and lift platforms
- ▶ Aerial platforms

ENERGY

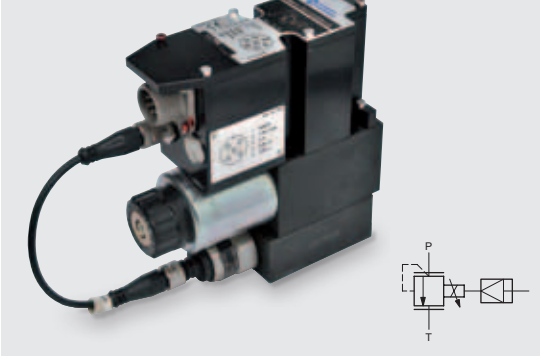
- ▶ Gas turbines
- ▶ Steam turbines
- ▶ Lubrication
- ▶ Solar energy
- ▶ Hydroelectric energy
- ▶ Wind energy
- ▶ Geothermal energy



PROPORTIONAL VALVES

Proportional valves are available with OBE (on board electronics) and off board electronics. OBE is available either in open loop version ("G") or with feedback ("J") version.

PRED3J



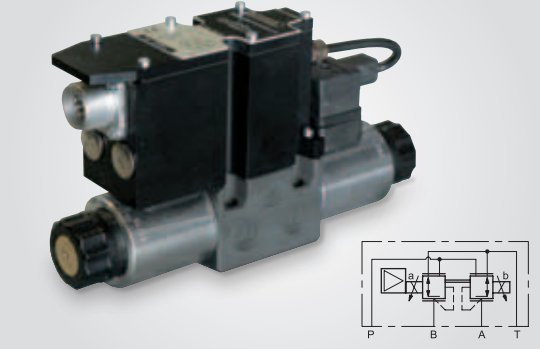
PRESSURE RELIEF VALVES – Type PRED3, PRED3G AND J (DIRECT) AND PRE3, PRE3G AND J (PILOTED)

Size	ND 06
Pressure	up to 350 bar
Flow rate	1 ÷ 50 l/min

Type PRE*, PRE*G AND J

Size	ND 10, 25, 32
Pressure	up to 350 bar
Flow rate	200 ÷ 500 l/min

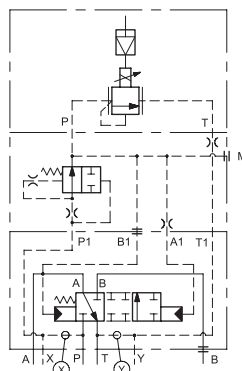
ZDE3G



PRESSURE REDUCING VALVES – Type MZE (PILOTED, MODULAR VERSION) AND ZDE3, ZDE3G (DIRECT)

Size	ND 06
Pressure	up to 230 bar
Flow rate	up to 50 l/min

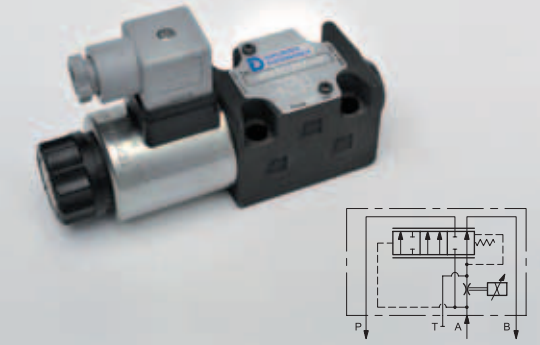
DZCE5G



BALANCING VALVES Type DZCE*, DZCE*G

Size	ND 10, 16, 25
Pressure	up to 300 bar
Flow rate	150 ÷ 500 l/min

QDE3



COMPENSATED FLOW CONTROL VALVES Type QDE3, QDE5

Size	ND 06, 10
Pressure	250 bar
Flow rate	up to 80 l/min

Proportional valves are available with OBE (on board electronics) and off board electronics. OBE is available either in open loop version ("G") or with feedback ("J") version.

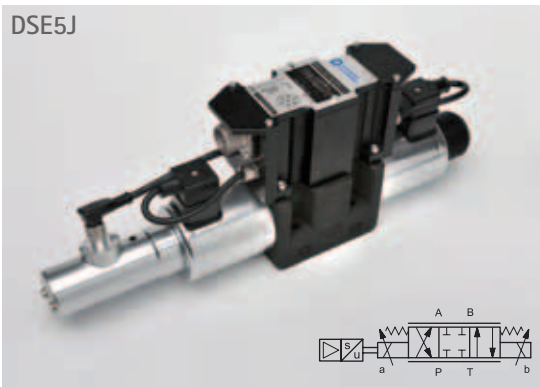
RPCED1



FLOW CONTROL VALVES – Type RPCED1 (DIRECT), RPCER1 (FEEDBACK), RPCE* (PILOTED)

Size	ND 06, 10, 16
Pressure	250 bar
Flow rate	up to 100 l/min

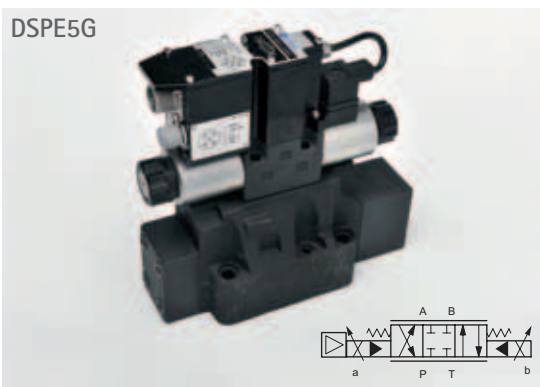
DSE5J



DIRECT OPERATED DIRECTIONAL VALVES Type DSE3, DSE3G AND J, DSE5, DSE5G AND J

Size	ND 06, 10
Pressure	350 / 320 bar
Flow rate	30 ÷ 75 l/min

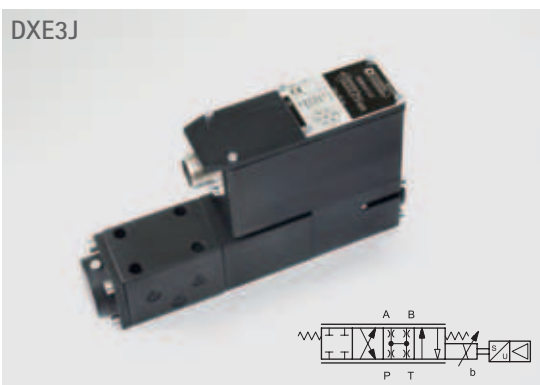
DSPE5G



PILOT OPERATED DIRECTIONAL VALVES Type DSPE*, DSPE*G AND J

Size	ND 06, 10, 16, 25, 32
Pressure	350 bar
Flow rate	80 ÷ 500 l/min

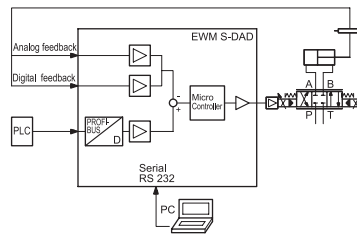
DXE3J



SERVO-PROPORTIONAL VALVES – Type DXE*J

Size	ND 06, 10,
Pressure	350 bar
Flow rate	40 - 100 l/min

EWM



DIGITAL CARDS FOR CLOSED LOOP – Type EWM

Rail mounting DIN EN 50022.

Card controls:

S – stroke

SP – stroke and pressure

MS – master and slave

SS – synchro stroke

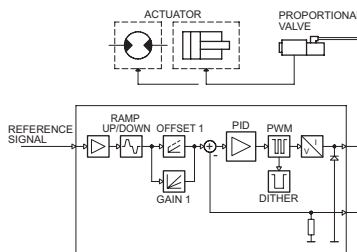
P – pressure

PQ – pressure and flow

PID – customizable

RL – speed

EDC-1

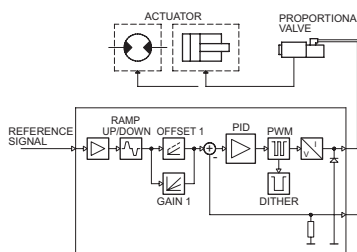
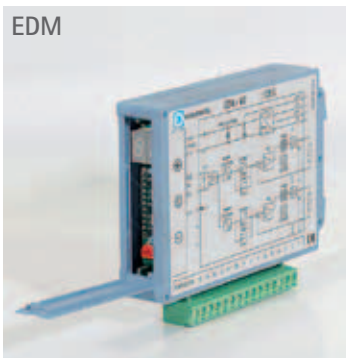


DIGITAL AMPLIFIER FOR OPEN LOOP Type EDC-1

Plug version DIN 43650

Max deliverable current 2,6 A

EDM



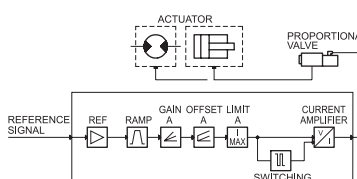
DIGITAL AMPLIFIER FOR OPEN LOOP Type EDM-M

Rail mounting DIN EN 50022

Open loop control of single and double solenoid valves and valves with two independent channels

Max deliverable current 2,6 A

EPA



POWER AMPLIFIER FOR OPEN LOOP Type EPA-M

Rail mounting DIN EN 50022

Open loop control of single and double solenoid valves and valves with two independent channels

Max deliverable current 2 A

PRESSURE & FLOW CONTROL VALVES

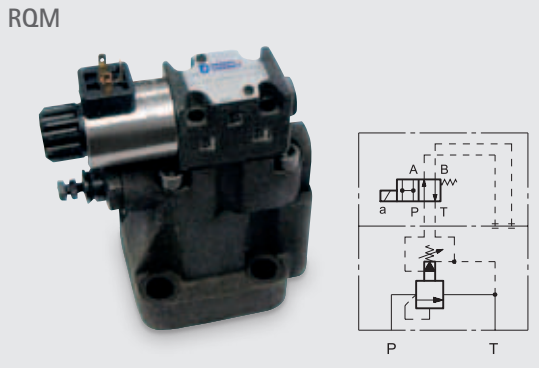
RQ5-P



PRESSURE RELIEF VALVES – Type RQ*-P

Size	ND 10, 25, 32
Pressure	up to 350 bar
Flow rate	250 ÷ 500 l/min
Also available with threaded ports (type RQ*-W)	

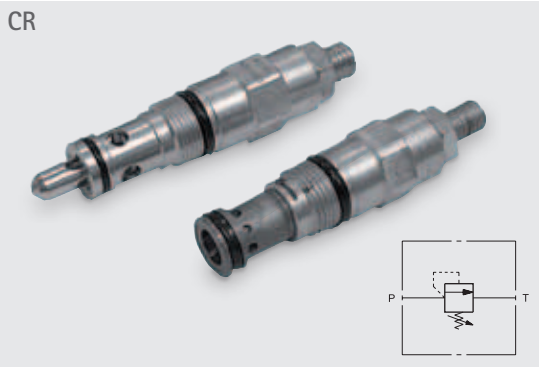
RQM



PRESSURE RELIEF VALVES WITH UNLOADING – Type RQM

Size	ND 10, 25, 32
Pressure	up to 350 bar
Flow rate	250 ÷ 500 l/min
Also available with threaded ports (type RQM*-W)	
Also available in explosion-proof version ATEX 94/9/CE standards (type RQM*K)	
Also available with automatic unloading (type MRQA)	
Also available with venting (type RQAM, RQRM)	

CR



PRESSURE RELIEF VALVES, CARTRIDGE EXECUTION Type CR, CRQ, DBV

Pressure	up to 380 bar
Flow rate	50 ÷ 120 l/min

PRESSURE COMPENSATOR Type PCK06

Differential pressure	up to 33 bar
Flow rate	40 l/min

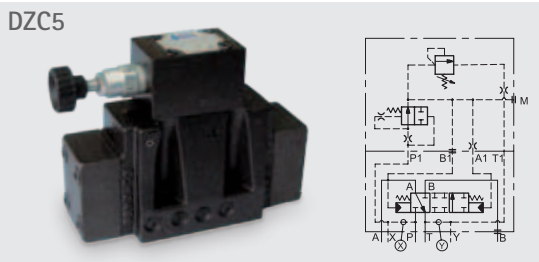
PRESSURE REDUCING VALVES – Type ZP

Size	ND 10, 25
Pressure	up to 210 bar
Flow rate	40 - 110 l/min

SEQUENCE (S), UNLOADING (U), BACKPRESSURE (T), BALANCING (X) VALVES

Size	ND 10, 25
Pressure	up to 140 bar
Flow rate	60 - 150 l/min

DZC5



BALANCING VALVES – Type ZC2, DZC

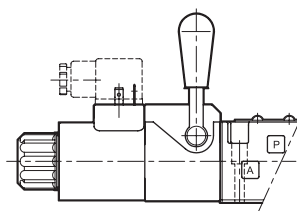
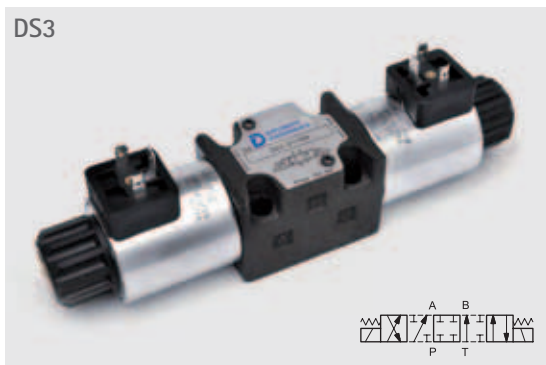
Size	ND 06, 10, 16, 25
Pressure	up to 210 bar
Flow rate	up to 500 l/min

COMPENSATED FLOW CONTROL VALVES – Type RPC (2-WAY), RPC-T3 (3-WAY)

Size	ND 06, 10, 16
Pressure	250 - 320 bar
Flow rate	up to 150 l/min

DIRECTIONAL VALVES

DS3



SOLENOID OPERATED CONTROL VALVES – Type DS3 AND DS5

Size	ND 06, 10
Pressure	350 – 320 bar
Flow rate	100 – 150 l/min

SOLENOID OPERATED CONTROL VALVES, COMPACT EXECUTION Type DL3 and DL5

Size	ND 06, 10
Pressure	280 – 320 bar
Flow rate	50 – 125 l/min

MD1K

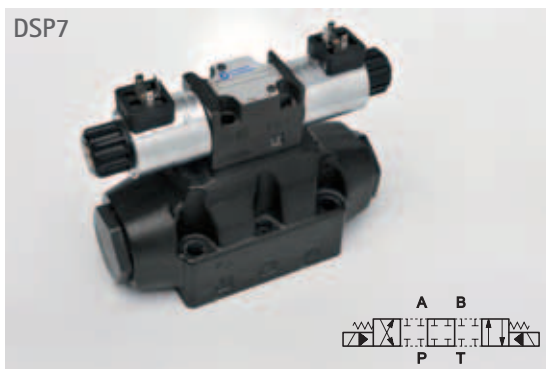


SOLENOID OPERATED CONTROL VALVES, EXPLOSION PROOF – Type MD1K, E*P4K

ATEX 94/9/CE standards

Size	ND 06, 10, 16, 25
Pressure	350 bar
Flow rate	50 ÷ 600 l/min

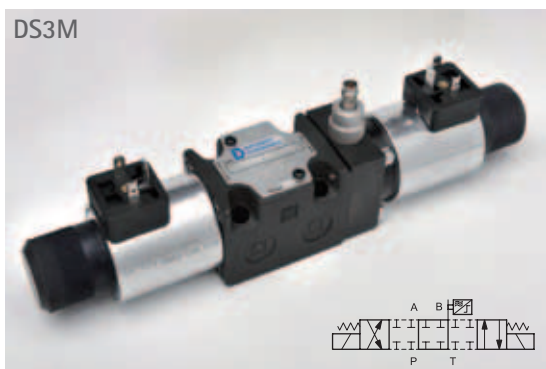
DSP7



PILOT OPERATED DISTRIBUTORS Type E4P4, E4R4, DSP7, E5P4, DSP10

Size	ND 10, 16, 25, 32
Pressure	350 – 420 bar
Flow rate	150 ÷ 1100 l/min

DS3M

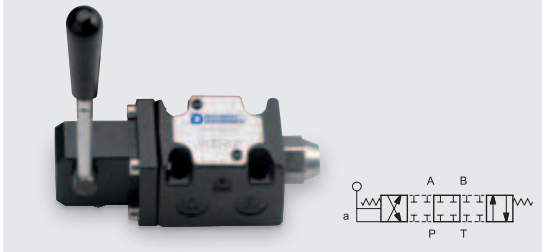


MONITORED VALVES – Type DS3M, DS5M, E*P4M

In compliance with the requirements of the European Machinery Directive

Size	ND 06, 10, 16, 25
Pressure	350 (420) bar
Flow rate	50 ÷ 600 l/min

DSH3



DISTRIBUTORS WITH LEVER (DSH), MECHANIC (DSR3), PNEUMATIC (DSA), HYDRAULIC (DSC3) CONTROL

Size	ND 06, 10
Pressure	up to 350 bar
Flow rate	75 - 125 l/min

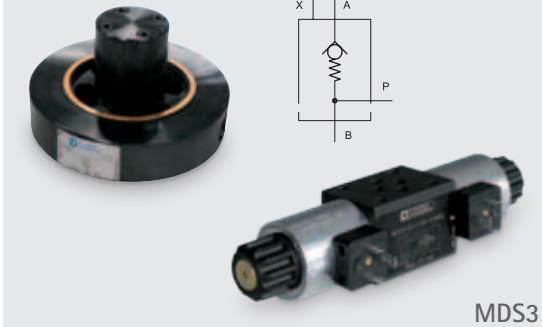
VR-I



CHECK VALVES – Type VR-I (CARTRIDGE), VD-W (IN-LINE), VR-P, VP (SUBPLATE)

Opening pressure	up to 10 bar
Flow rate	25 ÷ 850 l/min

CFP



FILLING VALVES – Type CFP

Pressure	350 bar
Flow rate	up to 2500 l/min

SOLENOID OPERATED VALVES, MODULAR VERSION Type MDS3, MDF3, DD44

Size	ND 06, 10
Pressure	280 ÷ 350 bar
Flow rate	50 ÷ 75 l/min

DT03



POPPET TYPE VALVES – Type KT08 (CARTRIDGE), DT03 (SUBPLATE), MDT (MODULAR)

Size	ND 06
Pressure	up to 350 bar
Flow rate	50 - 25 l/min

LC/LP



LOGIC ELEMENTS, CARTRIDGE VALVES – Type LC

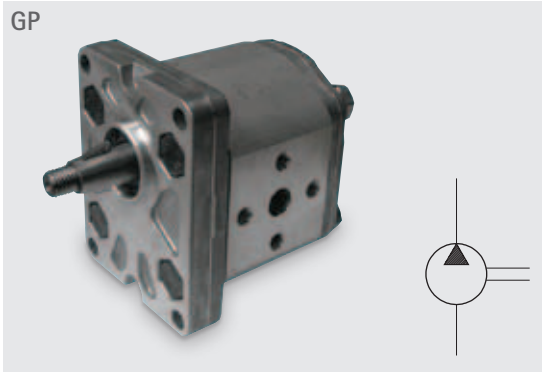
Size	ND 16, 25, 32, 40, 50, 63
Pressure	420 bar
Flow rate	200 ÷ 3000 l/min

CONTROL COVERS – TYPE LP

Size	ND 16, 25, 32, 40, 50, 63
Functions:	Flow control
	Pressure control

PUMPS & CYLINDERS

GP



EXTERNAL GEAR PUMPS – Type 1P, GP

Displacements $1,1 \div 87,6 \text{ cm}^3/\text{rev}$

Pressure $190 \div 310 \text{ bar}$

Speed $400 \div 6000 \text{ rpm}$

INTERNAL GEAR PUMPS – Type IGP

Displacements $3,6 \div 251,7 \text{ cm}^3/\text{rev}$

Pressure $210 \div 330 \text{ bar}$

Speed $400 \div 3600 \text{ rpm}$

PVE



VARIABLE DISPLACEMENT VANE PUMPS

Type PVD, PVE, PVA

Displacements $6,3 \div 100 \text{ cm}^3/\text{rev}$

Pressure $35 \div 160 \text{ bar}$

Speed $800 \div 1800 \text{ rpm}$

FIXED DISPLACEMENT VANE PUMPS – Type DFP

Displacements $18 \div 193,4 \text{ cm}^3/\text{rev}$

Pressure $140 \div 210 \text{ bar}$

Speed $600 \div 2700 \text{ rpm}$

VPPL



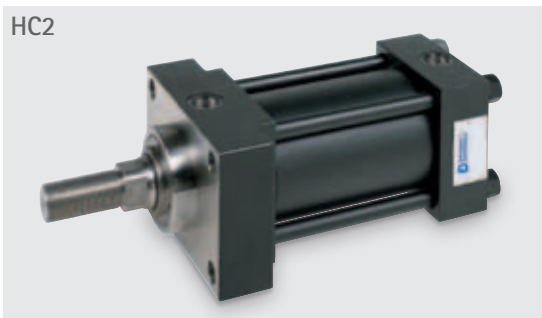
PISTON PUMPS – Type VPPM, VPPL

Displacements $8 \div 100 \text{ cm}^3/\text{rev}$

Pressure $220 - 280 \text{ bar}$

Speed $500 \div 3000 \text{ rpm}$

HC2



HYDRAULIC CYLINDERS WITH TIE RODS – Type HC2

ISO 6020/2

10 bore sizes from 25 to 200 mm

14 mounting styles

HYDRAULIC CYLINDERS, HEAVY DUTY – Type HC3

ISO 6020

12 bore sizes from 50 to 400 mm

5 mounting styles

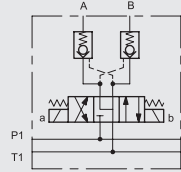
SERVO-CYLINDERS

ISO 6020/2

magnetostrictive position sensor with analog or digital output

MOBILE SECTOR

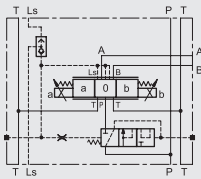
BD6



BANKABLE DIRECTIONAL CONTROL VALVES Type BD6

Size	ND 06
Pressure	280 bar
Flow rate	40 l/min

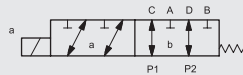
BLS6



BANKABLE LOAD - SENSING PROPORTIONAL CONTROL VALVE - Type BLS6

Size	ND 06
Pressure	300 bar
Flow rate	120 l/min

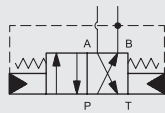
BDF



BANKABLE SIX - WAY FLOW SELECTION SWITCH Type BDF

Size	ND 06, 10
Pressure	320 bar
Flow rate	60, 90 l/min

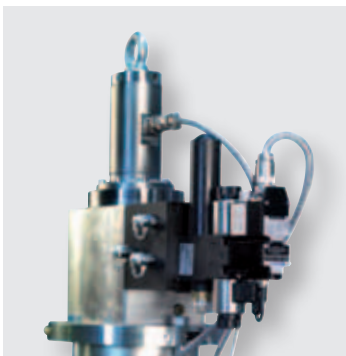
DSB5



SELF REVERSING VALVE - Type DSB*

Size	ND 06, 10
Pressure	320 - 350 bar
Flow rate	30 - 100 l/min

CUSTOMIZED SOLUTIONS



Solutions specifically studied and designed for the energy sector



Solutions specifically studied and designed for the metal forming sector



Solutions specifically studied and designed for steam turbines



Your full line partner

Duplomatic Oleodinamica SpA

Via Mario Re Depaolini 24 - 20015 Parabiago (MI) - Italy
T +39 0331 89 51 11 - F +39 0331 89 53 19
vendite.ita@duplomatic.com - sales.exp@duplomatic.com

www.duplomatic.com